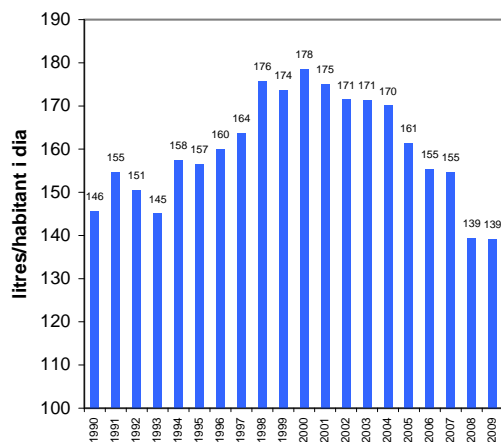


CONSUM AIGUA* (m³)	1990	1991	1992	1993	1994	1995	1996	1997	1998	1999	2000	2001	2002	2003	2004	2005	2006	2007	2008	2009
Domèstic	6.319.970	6.745.606	6.669.118	6.665.451	7.135.289	7.044.264	7.320.969	7.193.355	7.679.841	7.610.628	7.970.859	7.647.534	7.763.347	7.946.061	8.093.498	7.972.229	7.850.711	7.786.752	7.579.099	7.634.130
Comercial	1.506.069	1.554.777	1.485.104	1.375.067	1.482.798	1.488.758	1.419.135	1.452.214	1.557.892	1.539.225	1.531.506	1.551.856	1.509.693	1.573.541	1.588.423	1.548.214	1.519.114	1.528.127	1.383.020	1.403.055
Industrial	1.760.623	1.664.508	1.495.086	1.255.551	1.472.292	1.450.778	1.453.400	1.634.363	1.823.784	1.716.281	1.721.499	1.762.240	1.583.629	1.499.077	1.448.562	1.296.969	1.173.580	1.242.731	1.018.641	928.463
Públic	631.031	723.089	742.310	735.735	780.184	780.812	773.146	784.942	845.692	860.003	797.633	914.243	859.186	925.516	873.268	781.921	832.677	864.137	466.107	648.048
TOTAL aigua consum	10.217.692	10.687.979	10.391.617	10.031.804	10.870.564	10.764.612	10.966.650	11.064.873	11.907.209	11.726.137	12.021.497	11.875.873	11.715.855	11.944.195	12.003.751	11.599.333	11.376.082	11.421.747	10.446.867	10.613.696
Població	192.142	189.404	189.113	189.443	189.006	188.386	187.742	185.266	185.586	184.946	184.542	185.863	187.201	191.057	193.338	196.971	200.545	202.142	204.734	208.878

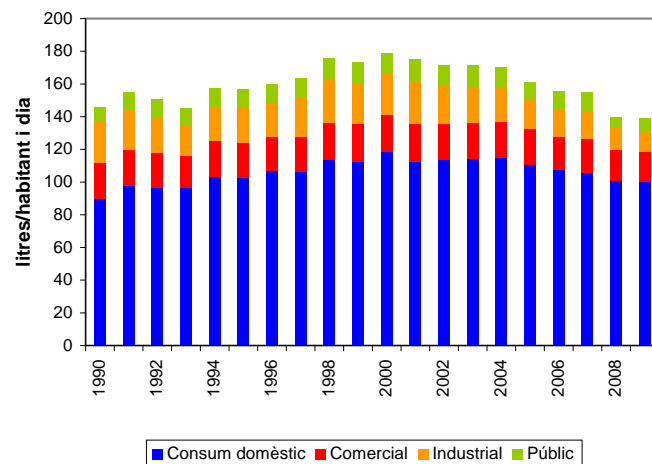
CONSUM AIGUA (%)	1990	1991	1992	1993	1994	1995	1996	1997	1998	1999	2000	2001	2002	2003	2004	2005	2006	2007	2008	2009
Domèstic	61,85	63,11	64,18	66,44	65,64	65,44	66,76	65,01	64,50	64,90	66,31	64,40	66,26	66,53	67,42	68,73	69,01	68,17	72,55	71,93
Comercial	14,74	14,55	14,29	13,71	13,64	13,83	12,94	13,12	13,08	13,13	12,74	13,07	12,89	13,17	13,23	13,35	13,35	13,38	13,24	13,22
Industrial	17,23	15,57	14,39	12,52	13,54	13,48	13,25	14,77	15,32	14,64	14,32	14,84	13,52	12,55	12,07	11,18	10,32	10,88	9,75	8,75
Públic	6,18	6,77	7,14	7,33	7,18	7,25	7,05	7,09	7,10	7,33	6,64	7,70	7,33	7,75	7,27	6,74	7,32	7,57	4,46	6,11
TOTAL	100,00	100,00	100,00	100,00	100,00	100,00	100,00	100,00	100,00	100,00	100,00	100,00	100,00	100,00	100,00	100,00	100,00	100,00	100,00	100,00

CONSUM AIGUA (l/hab i dia)	1990	1991	1992	1993	1994	1995	1996	1997	1998	1999	2000	2001	2002	2003	2004	2005	2006	2007	2008	2009
Consum domèstic	90,12	97,58	96,62	96,40	103,43	102,45	106,84	106,38	113,37	112,74	118,34	112,73	113,62	113,95	114,69	110,89	107,25	105,54	101,15	100,13
Comercial	21,47	22,49	21,52	19,89	21,49	21,65	20,71	21,48	23,00	22,80	22,74	22,88	22,09	22,56	22,51	21,53	20,75	20,71	18,46	18,40
Industrial	25,10	24,08	21,66	18,16	21,34	21,10	21,21	24,17	26,92	25,42	25,56	25,98	23,18	21,50	20,53	18,04	16,03	16,84	13,59	12,18
Públic	9,00	10,46	10,75	10,64	11,31	11,36	11,28	11,61	12,48	12,74	11,84	13,48	12,57	13,27	12,37	10,88	11,38	11,71	6,22	8,50
Consum total	145,69	154,60	150,55	145,08	157,57	156,55	160,04	163,63	175,78	173,71	178,47	175,06	171,46	171,28	170,10	161,34	155,41	154,80	139,42	139,21

Consum d'aigua municipal



Consum d'aigua municipal



Consum d'aigua per sectors, 2009

